



Stainless steel enclosures/distribution boxes/cabinets

Features

- Customer-specific designs also for non-explosion-hazard zones
- Approved in accordance with directive 94/9/EC
- Long service life
- Sea water resistant
- High IP rating
- Ex approval for distribution boxes available
- Flanges on 5 housing walls possible

Scope of delivery

The scope of delivery includes wall attachment straps, internal and external PE connection, as well as a mounting plate for the empty housings/distribution cabinets.

Description

BARTEC stainless steel housings and distribution boxes are designed and approved for Zone 1 and 2 as well as Zone 21 and 22. They are particularly suitable for applications under extreme environmental conditions, and they provide reliable protection under heavy loads. The housings are made from 1.4301 (V2 A) or 1.4404 stainless steel (V4 A). The series includes empty housings and distribution boxes with door or cover. From a housing height of 120 mm, the housings can be supplied with or without flange plates. In addition to 25 standard sizes, approved customer-specific design variants are also available.

Explosion protection

Ex protection type

acc. to EN 60079-0 for empty enclosures/cabinets

Ex II 2G Ex e II

acc. to EN 60079-0 for distribution boxes

Ex II 2G Ex e [ia/ib] IIC T5 resp. T6

Ex II 2D Ex tD A21 IP65 T 80 °C

Certifications

Empty enclosure IBExU99ATEX1118 U

Terminal box IBExU99ATEX1096

Ambient temperature

-20 °C to +40 °C at T6

-20 °C to +55 °C at T5

-55 °C with silicone hose line

Technical data

Material

1.4301, AISI 304 high quality stainless steel

optional

1.4404, AISI 316 L high quality stainless steel

Surface

brushed, painted or electro polished on request

Standard seals

EPDM

Mechanical strength

Impact energy 7 Nm

Version

with or without gland plated

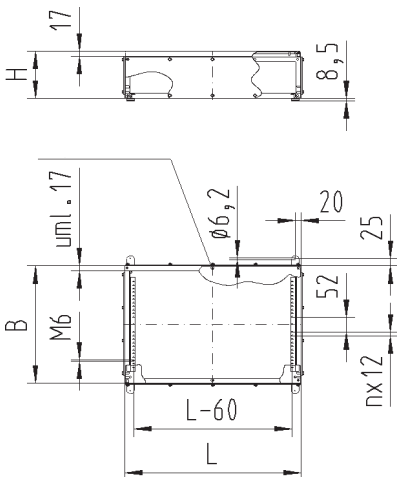
Standard sizes

see selection chart

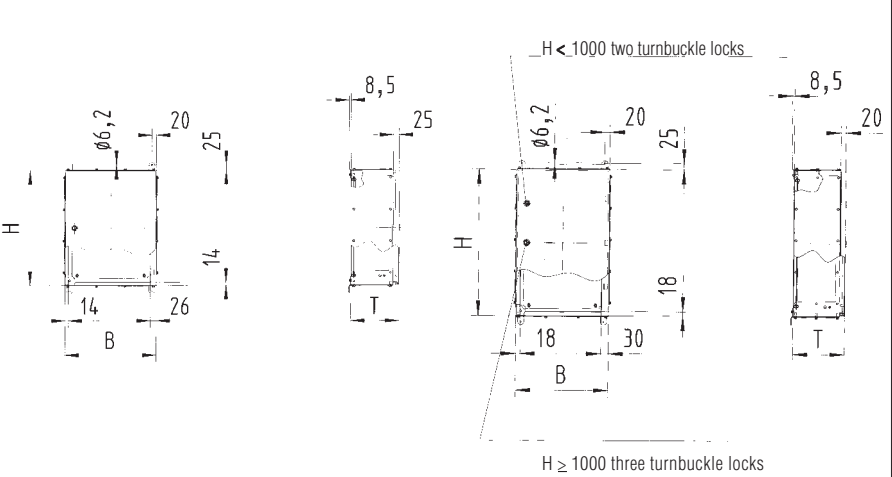
Protection class acc. to IEC 60529

max. IP 66

Enclosure dimensions



Cabinet dimensions





High-quality stainless steel enclosures/distribution boxes/cabinets

Selection chart

						Gland plates openings minimum depth for flanges 120 mm			
Version	Code no.	Enclosure with lid in mm (w x h x d)	Code no.	Enclosure with hinged door in mm (w x h x d)	Code no.	Flanges Side A, B, (E)	Code no.	Flanges Side C, D, (E)	Code no.
Empty Enclosure Ex e	1	100 x 100 x 60	17	200 x 300 x 155	51	without	1	without	1
		150 x 150 x 80	01						
Distribution Box Ex e II	2	400 x 150 x 80	10	380 x 300 x 155	54	Face A	2	Face C	2
		200 x 200 x 80	03	300 x 380 x 210	52				
		300 x 200 x 80	22						
Distribution Box Ex e [ia/ib] II C	3	150 x 150 x 100	02	400 x 400 x 210	57	Face B	3	Face D	3
		200 x 200 x 120	04						
Distribution Box Ex i II	4	300 x 200 x 120	06	400 x 600 x 210	58	Face A + B	4	Face C + D	4
		400 x 200 x 120	11	600 x 600 x 210	59				
Distribution Box Ex e I	5	600 x 200 x 120	25			600 x 760 x 210	60	Face E + A	5
		300 x 300 x 120	07						
Distribution Box Ex i I	6	300 x 300 x 160	08	600 x 800 x 300	61	Face E + B	6	Face E + D	6
		380 x 380 x 160	26						
		400 x 200 x 160	12	800 x 800 x 300	62				
Distribution Box Non-Ex	7	400 x 400 x 160	14			800 x 1000 x 300	63	Face E + A + B	7
		500 x 400 x 160	15						

or

Complete order no.

Please enter code number.

Example: Ex e distribution box with hinged door
Dimensions: 400 x 400 x 210 mm with gland plates on face B + C + D
Type 07-56D2-5734

07-56 -

Design	Code no.
Enclosure with screwed lid	B
Enclosure with hinged door	D